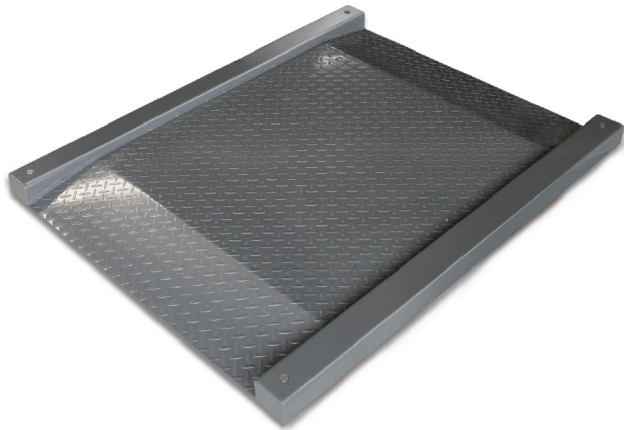


# KERN KFD 1500V20LM

# KERN

Weighing bridge made of non-slip corrugated steel plate, lacquered



## Category

Brand	KERN
Product category	Component
Product group	Weighing bridge
Product family	KFD-V20-IP67

## Measuring System

Weighing capacity [Max]	1500 kg
Readability [d]	500 g
Minimum weight [Min]	10 kg
Loadcell type	ZEMIC H8C 1 ton

## Approval

Verification scale interval [e]	500 g
Conformity assessment possible ex works	✓

## Construction

Dimensions weighing platform (W×D×H)	1800×1420×95 mm
Material weighing plate	steel, powder-coated
Material platform	steel, powder-coated
Dimensions weighing surface (W×D)	1200×1200 mm
Cable length	5 m
Display device cable length	5 m
Allowed cable length display device [Max]	30 m
Material load cell(s)	alloyed steel
Load cells - number	4

## Functions

IP protection - complete device	IP67 (load cell)
---------------------------------	------------------

IP protection - load cell	IP67
IP protection - platform	IP67

## Packing & Shipping

Readability force [d] (N)	2 d
Dimensions packaging (W×D×H)	1800×1400×150 mm
Net weight	175 kg
Shipping method	Freight
Net weight approx.	175 kg
Gross weight approx.	180 kg
Shipping weight	180 kg

## Services (optional)

Article number for conformity assessment	965-230
Article number for DAkkS calibration	963-130

## Pictograms

### STANDARD



### FACTORY

